



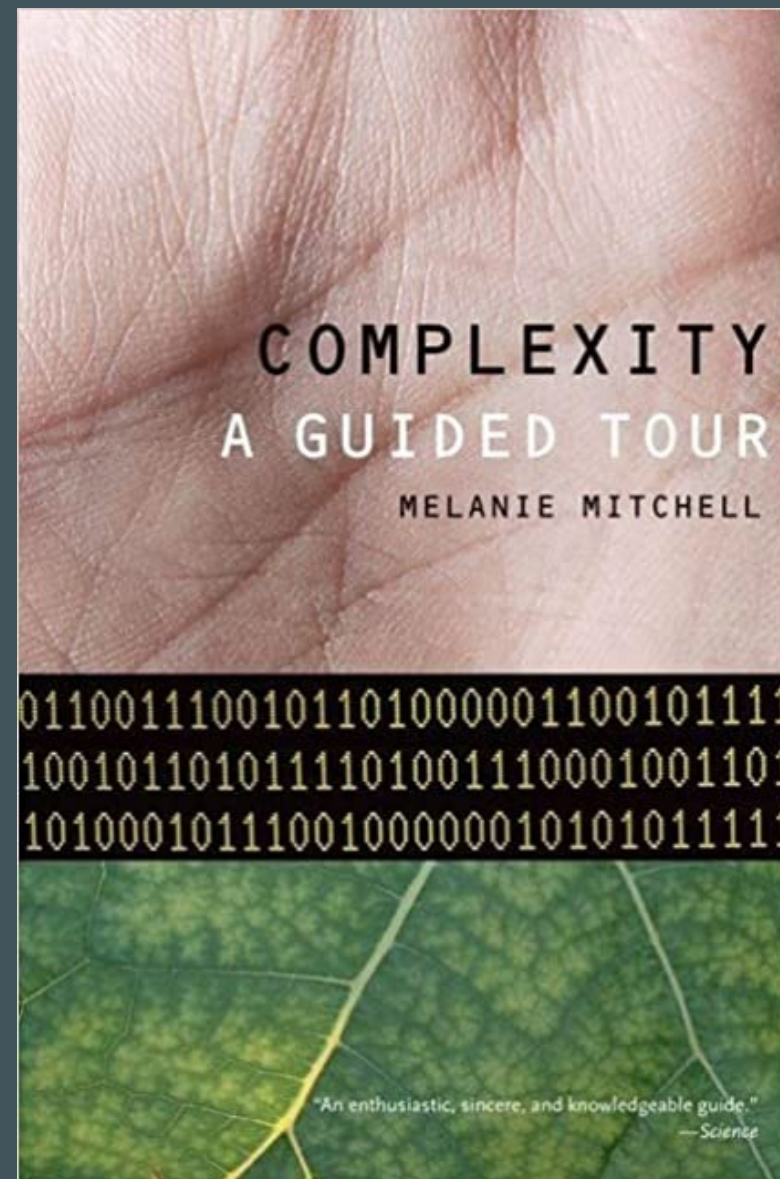
Back to school

Experiences and insights
from the Complex Systems
Summer School





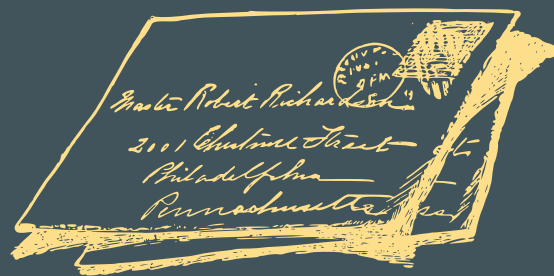
<https://www.bbc.co.uk/programmes/b03ls154>



<https://g.co/kgs/FkWzkP>



<https://www.complexityexplorer.org/>



Application

- motivation letter
- questionnaire
- two recommendation letters
- diversity statement
- CV



The origins, evolution, and diversity of human languages



SHARE



Sign Up For SFI News

<https://www.santafe.edu/research/projects/the-origins-evolution-and-diversity-of-human-langu>

Language Is a Complex Adaptive System: Position Paper

The “Five Graces Group”

Clay Beckner

University of New Mexico

Nick C. Ellis

University of Michigan

Richard Blythe

University of Edinburgh

John Holland

Santa Fe Institute; University of Michigan

Joan Bybee

University of New Mexico

Jinyun Ke

University of Michigan

Morten H. Christiansen

Cornell University

Diane Larsen-Freeman

University of Michigan

William Croft

University of New Mexico

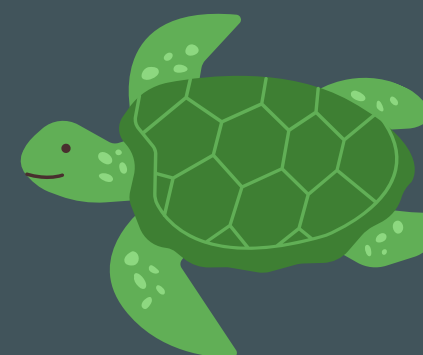
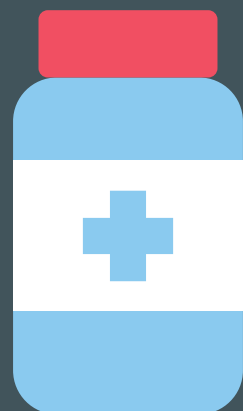
Tom Schoenemann

Indiana University

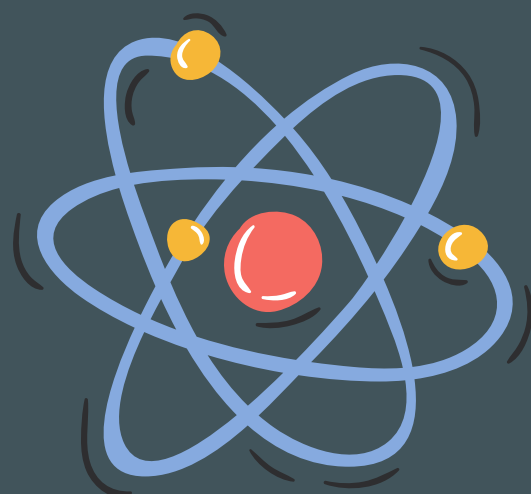
<https://doi.org/10.1111/j.1467-9922.2009.00533.x>



Student's background



$$x = \frac{-b \pm \sqrt{b^2 - 4ac}}{2a}$$





IAIA
INSTITUTE OF
AMERICAN INDIAN ARTS



Schedule

S	M	T	W	T	F	S

David Krakauer: Complexity
Liz Bradley: Nonlinear
dynamics
Aaron Clauset: Networks
Paul Smaldino: Math models
& ABMs
Dave Feldman: Information
theory

@SFI Postdoc flash talks

Movie night
Hike to Bandelier

S	M	T	W	T	F	S

Hyejin Youn: Innovation
André de Roos: Population
modeling
Mary O'Connor: Ecosystems
Geoffrey West: Scaling
Sara Walker: Life
Andreas Wagner: Evolution &
adaptation

@SFI Project meetings &
check ins

Meow wolf party

S	M	T	W	T	F	S

Matt Jackson: Economic
networks
Orit Peleg: Collective behavior
Thalia Wheatley: Collective
neuroscience
Bruno Olshausen: Neural
encoding

Ask-me-anything sessions
@SFI Project meetings &
check ups

Camping at White Sands

S	M	T	W	T	F	S

Group project work &
presentations

Group collaboration



Group project 1



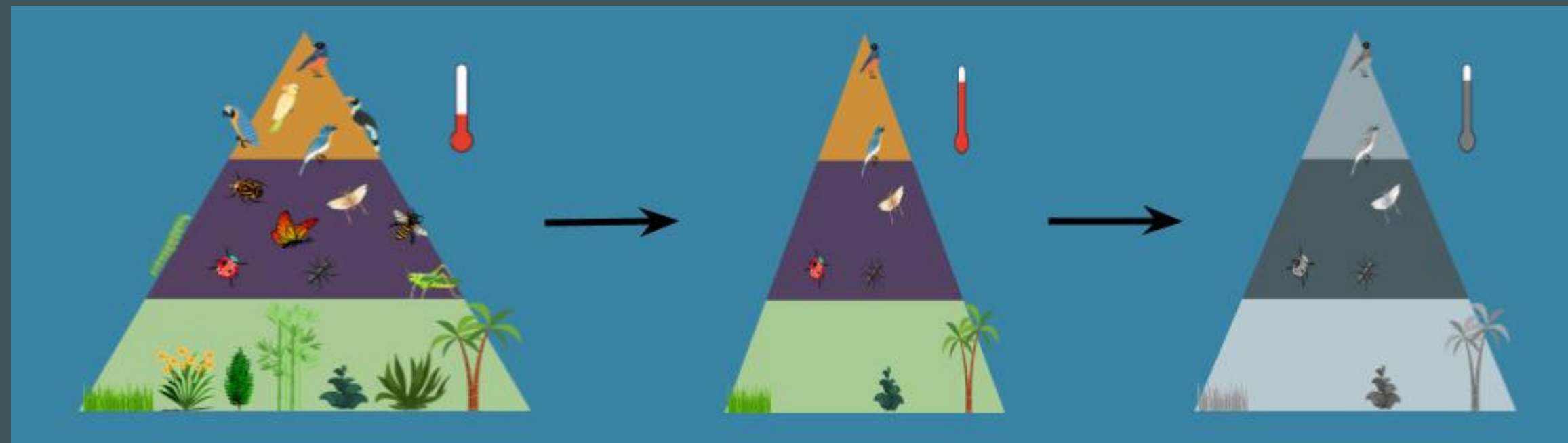
Complexity in insular ecological communities:

Predicting climate warming impacts on island food web structure and stability

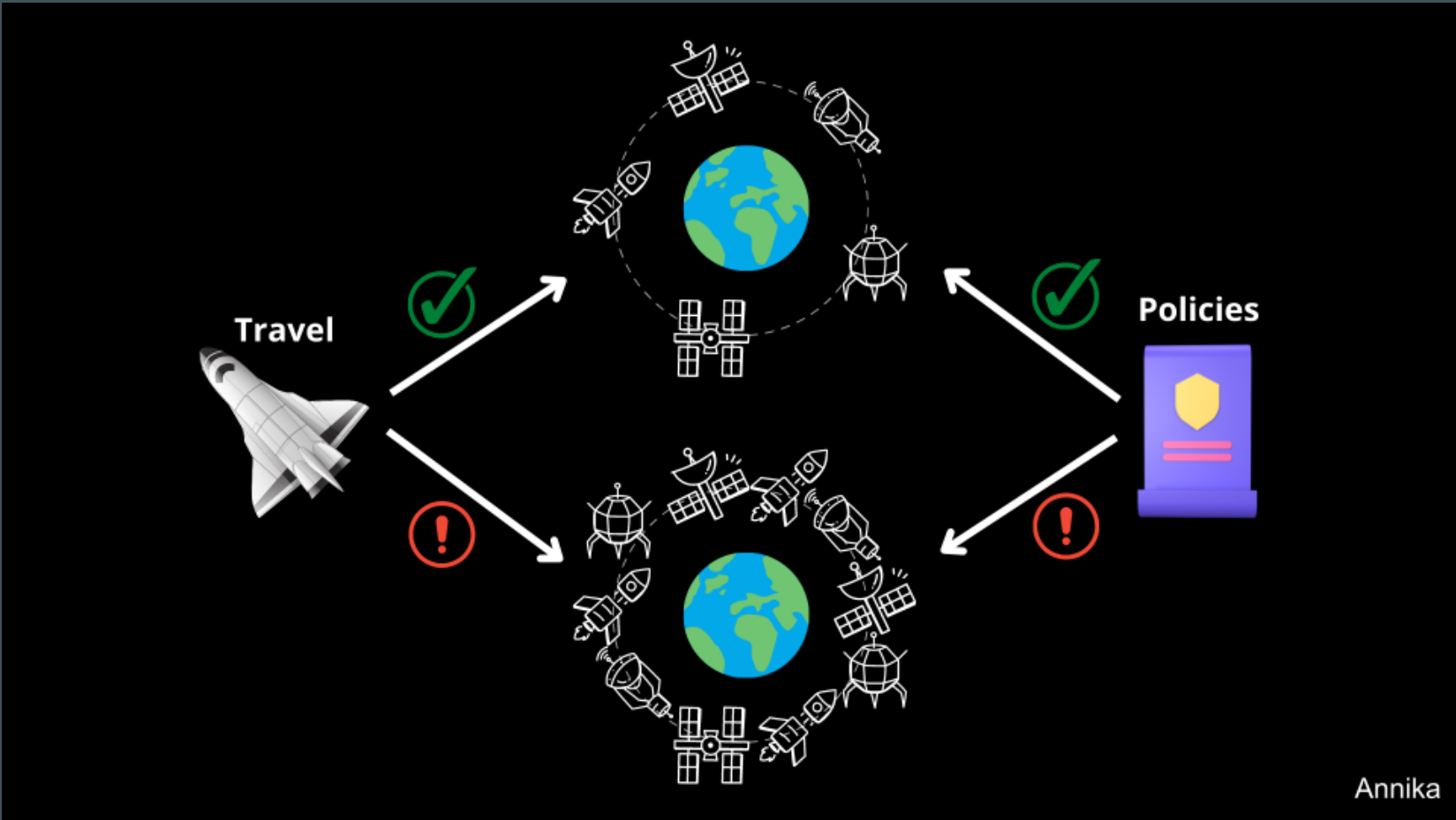
Amy, Ankit, Annika, Gates, Keila, Tobias, Violeta



@GatesDupont, @AnnikaTjuka, @ReischTobias, @sauropodlets, @stark_keila, @VioletaCalleja



Group project 2

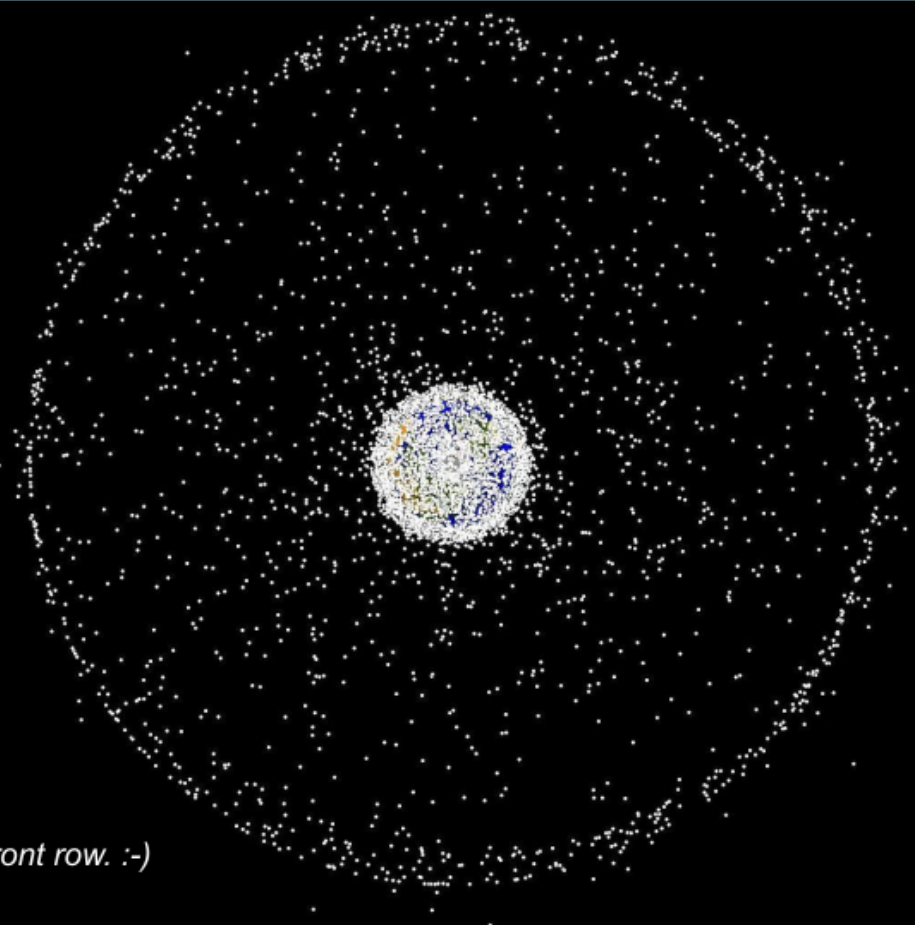


Space Commons

Keiko Nomura
Darcy Bird
Mathieu Baltussen
Annika Tjuka
Haily Merritt
Dan Falk

@keiko_nomuraa
@darcybarcy
@AnnikaTjuka
@HailyMerritt
@danfalk

If you can read this, you must be sitting in the front row. :-)



Group project 2



Must-haves



Ice breakers

- Silent discussion
- Pair-wise introductions
- Name tags are important



Community

- Discord/Slack/Mattermost
- Sports, activities, and games



Collaboration

- Group project work
- Creative group project



Mindset

- Openness
- Curiosity
- Interdisciplinarity



Conversation

- Informal chats over lunch
- Students on their own



Food

- A happy belly leads to a healthy mind

After school



Resources

A dedicated organized space to share slides, links, and other useful resources.



Contacts

A contact sheet allows students to reach out to each other and stay in touch.



Project report

Having a specific project to work on fosters exchange and collaboration.

Santa Fe

